




4580 W Roosevelt Rd. Hillside, IL 60162

Phone: 312-733-1098 Fax: 708-234-1351

## SPECIFICATIONS

MODEL APO-S2818-14RI-ADA 

### GENERAL

Fine quality sink formed of heavy duty 18 gauge, type 304 nickel bearing **handmade** stainless steel.

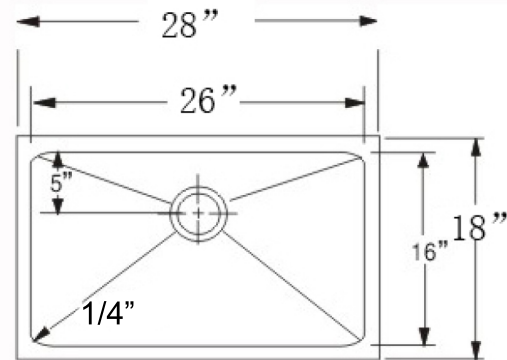
### DESIGN FEATURES

Bowl depth 5-1/2" with inside bowl dimensions of 26" X 16" and overall 28" X 18"

**Finish:** Inside bowl surfaces polished to a uniform satin finish.

**Underside:** High density sound absorption pads covered with a thick rubberized insulation layer on all bottom surfaces.

**Other:** Drain opening 3 1/2".



Minimum cabinet size 30"

Product shall be specified as APO-S2818-14RI-ADA

### OPTIONAL ACCESSORIES:

**Sink Grid:** APO-G20S2818

**Sink Drain:** A-SS-01, A-SS-02

### Warranty:

Limited Life Time warranty against manufacturer defects and craftsmanship