




4580 W Roosevelt Rd. Hillside, IL 60162

Phone: 312-733-1098 Fax: 708-234-1351

SPECIFICATIONS

MODEL APO-S2318-14RI-ADA 

GENERAL

Fine quality sink formed of heavy duty 18 gauge, type 304 nickel bearing **handmade** stainless steel.

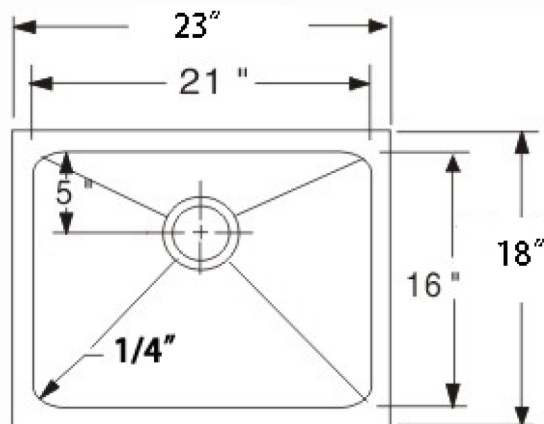
DESIGN FEATURES

Bowl depth 5-1/2" with inside bowl dimensions of 21" X 16" and overall 23" X 18"

Finish: Inside bowl surfaces polished to a uniform satin finish.

Underside: High density sound absorption pads covered with a thick rubberized insulation layer on all bottom surfaces.

Other: Drain opening 3 1/2".



Minimum cabinet size 24"

Product shall be specified as APO-S2318-14RI-ADA

OPTIONAL ACCESSORIES:

Sink Grid: APO-G20S2318

Sink Drain: A-SS-01, A-SS-02

Warranty:

Limited Life Time warranty against manufacturer defects and craftsmanship